

Advanced Access Control

Pinnacle

Pinnacle® 10 is an advanced access control and event management software platform for Windows®. The core features and seamless integration of best-in-class technology partners provide users with an expandable and highly functional solution. Built upon the Sielox access control innovation legacy of more than 40 years, Pinnacle® 10 is an advanced system design with multiple layers of scalable control for small office environments to global corporations with multiple buildings and unique access requirements. Pinnacle® 10 is available in five configurations – Ultra, Lite, Standard, Plus, and Professional – to manage your access control needs today and expand with your future requirements.

Pinnacle® is a feature-rich access control and event management system designed for ease of use. Cardholder database management and access level assignment is made simple through easy to navigate tabs or by an automated scheduler in conjunction with Pinnacle Data Exchange to automate additions, deletions and modifications of any cardholder data record. A display of your access and alarm events are available in real-time via the Pinnacle event monitor, utilizing up to four window views for unequalled control and flexibility. A wide range of event filters manage the display and provide alarm notifications via pop-up, e-mail and *.wav settings.

As part of the Sielox Core Products line, Pinnacle® is designed by Sielox engineers and manufactured in the USA. Both Pinnacle and the 1700 controller have been developed to meet or exceed any user requirement from entry level to enterprise-wide systems. The marriage of advanced management software with an intelligent controller from a single vendor has been a proven technology and application success since 1979. An onboard utilities program allows users to use popular features outside the application provide quick or persistent views of control and search functions including Event Link, Counter/N-Man (Control and Occupancy), Door Icon, System Cleanup, Ping and Report Scheduler.



Pinnacle® 10 features robust monitor screens and flexible filters for event management and simple or detailed reports.

- Wireless lock management
- Schlage NDE LE WiFi lock management
- LDAP Sync Service license
- TLS 1.2 security enhancement
- Web client from desktop or mobile
- Virtual environment (VM) support
- Single sign-on authentication
- Event link cameras and/or cardholder image
- Lockdown – local / regional / global
- Reader Block – local / regional / global
- Privilege Access Levels
- Graphical mapping
- FIPS 201 compliant
- Video integration



Pinnacle

Advanced Access Control

Continuous innovation delivers advanced solutions

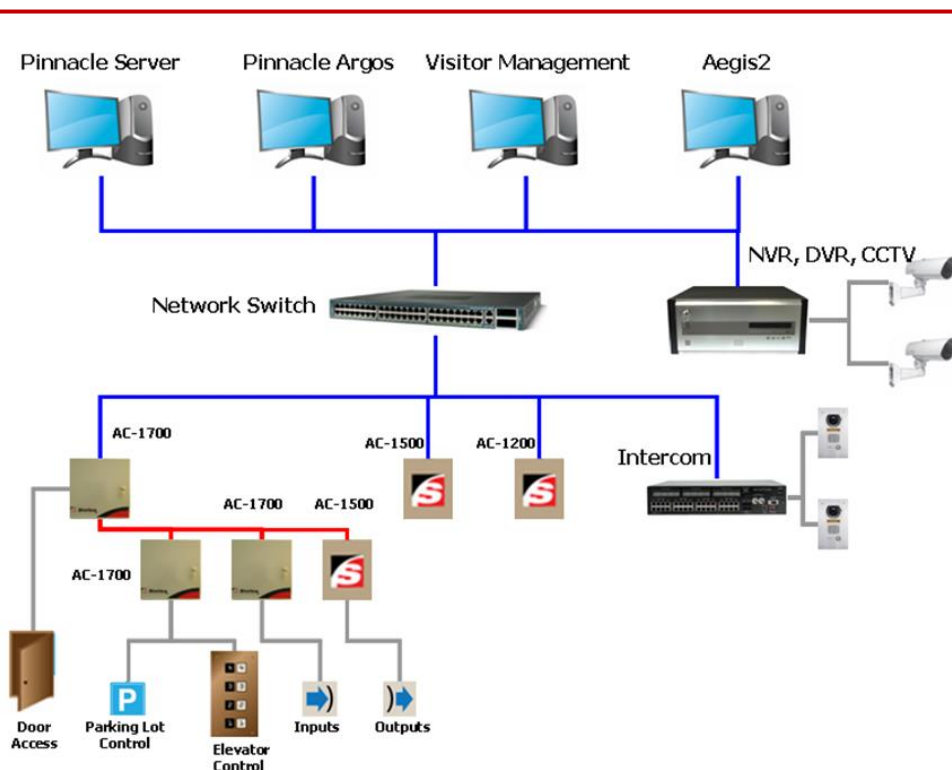
Pinnacle® utilizes Microsoft® SQL Server for ease of data management. LDAP has been added as a licensed service for large organizations seeking easier authentication of personnel database importation into Pinnacle. TLS 1.2 security has been added to enhance the safety of data across the system.

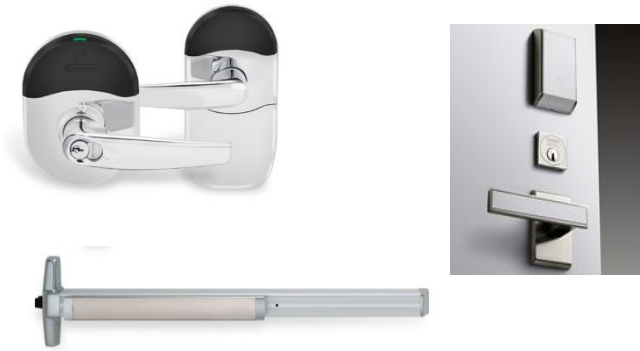
Database partitioning is also offered as an option, allowing a single Pinnacle System to be divided into smaller independent databases. Central administration and shared devices are both fully supported across all partitions.

Wireless lock solutions are an effective technology that dramatically reduces installation costs of traditional hard-wired access control doors by incorporating the Lock, Request to Exit, Door Status Switch and Reader in one complete package. 1700 controllers and Pinnacle can support up to 32 wireless locks in addition to the two hard wired doors/readers per controller. Current integrations are with Allegion Schlage and Von Duprin, ASSA ABLOY Aperio and Salto Sallis locks enabling cost effective lockdown extension of access control beyond the perimeter doors. Offline Schlage NDE and LE locks using existing WiFi offers significant savings.

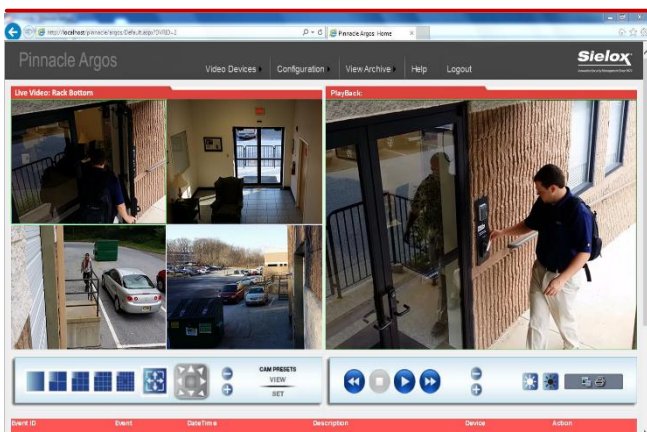
VMWare or MS HyperV is supported by Pinnacle® with Fault Tolerance (FT) providing failover capabilities via the virtual environment's software vSphere, which hosts the Pinnacle software. vSphere allows Pinnacle® to launch dynamically in a virtual environment thereby providing hot stand-by while requiring the purchase of a single Pinnacle® license.

Pinnacle® supports a single sign-on via Windows Authentication in addition to the Legacy Authentication (Pinnacle Login). In Windows Authentication mode, Pinnacle uses a Windows Account mapped to a Pinnacle Account to either start Pinnacle with no login (Windows Authentication), present a Legacy Pinnacle Login screen, block the user, or give the user the ability to choose either a Pinnacle or Windows Login (Mixed Mode).





Pinnacle and 1700 Controller manage the leading portfolios of wireless locks for integrators to provide end users with cost-effective lockdown capabilities of both perimeter and interior door openings in a variety of applications.



Pinnacle Argos™ is a free Web based application that integrates Pinnacle events to CCTV devices utilizing the Costar line of DVRs and NVRs with no driver or license fees.



Aegis3 is a graphical command and control integration software that can be installed on the same computer with Pinnacle, standalone, or deployed on multiple workstations. Create maps, drag and drop cameras, intercoms, doors, readers, inputs and outputs to a map and control with a mouse. Events can pop-up video on the screen, go to camera presets, and start DVR or NVR recording.

Web Client - Pinnacle features an optional web client allowing you to manage and monitor your system from any computer or mobile device.

Photo ID Badging - supports image capture as a standard feature and badge design and printing are optional.

Event Video Link (EVL) - now links to any DVR or NVR that supports the industry ATM/POS standard enabling the ability to link access control events to video for pop up, viewing and real-time recording. View live and recorded video for free without expensive VMS installation recurring licensing costs. Mark video events with alarm text-data for legal forensic requirements.

First Person Rule (Snow Day) - any door scheduled to be unlocked via Time Zone, will not do so until an authorized cardholder is admitted prior to the unlock schedule. There is never a need to worry that your building is unlocked when you are not there.

Two-Man Rule – addition of two-man rule moved to controller for decisions – no longer server-based. Available for both hardwired and wireless locks.

Lock Toggle - allows users to lock and unlock doors without a second credential to override pre-set schedules.

Privilege Access Levels – up to 16 privilege levels for Responders during lockdown, reader block and hard anti-pass back.

Pinnacle Utilities - in addition to the core Pinnacle application, Sielox has developed unique applications that are launched independently and provide quick or persistent views of control and search functions. The library of utilities include: Event Counter, N-Man (Control and Occupancy), Door Icon, Door List Control, System Cleanup, Ping and Report Scheduler.

Elevator Control - hardwired control up to 60 floors and Smart Control capabilities with Otis, ThyssenKrupp and Schindler

Visitor Management- Pinnacle is integrated with HID Easy Lobby® to identify exactly who is in your facility and why by scanning each visitor ID automatically and printing a customized badge in seconds.

Biometric Reader – database integration with fingerprint reader from Integrated Biometrics

Pinnacle SDK – custom development application

Pinnacle Version 10	Ultra	Lite	Standard	Plus	Pro
Number of Online Readers	8	32	64	128	Unlimited
Number of Cards	500	2,000	4,000	10,000	Unlimited
Client Workstations-Rich and Web	Single User	Single User	1 to Unlimited	1 to Unlimited	1 to Unlimited
Pinnacle Argos - Number of cameras ¹	N/A	32	32	32	32
Addressable Controllers	4	16	32	64	Unlimited
Wireless Locks ² (ASSA ABLOY, Salto, Schlage)	64 /128	128 / 256	256 /512	512 /1024	Unlimited
Wireless Locks ² (Schlage WiFi NDE, LE)	Unlimited	Unlimited	Unlimited	Unlimited	Unlimited
Time Zones ³	Unlimited	Unlimited	Unlimited	Unlimited	Unlimited
Total Access Levels / Privileges ⁴	Unlimited	Unlimited	Unlimited	Unlimited	Unlimited
Individual Expiring Access Levels per Cardholder ⁵	99	99	99	99	99
Number of Cardholder Custom Fields	Unlimited	Unlimited	Unlimited	Unlimited	Unlimited
Alarm Levels (with advanced alarm notification)	99	99	99	99	99
Holidays	32	32	32	32	32
Microsoft SQL 2014 Express SP3	Included	Included	Included	Included	Included
User Privileges	Included	Included	Included	Included	Included
First Person Rule (Snow Day)	Included	Included	Included	Included	Included
Event Filtering (w/ email support)	Included	Included	Included	Included	Included
Local, Regional, and Global I/O Links ⁶	Included	Included	Included	Included	Included
Hardware COM Server Licensing ⁷	N/A	N/A	N/A	N/A	Optional
Access Level Input and Output Control	Included	Included	Included	Included	Included
Multiple Card Formats	Included	Included	Included	Included	Included
System Reminders	Included	Included	Included	Included	Included
Scheduler (for recurring functions)	Included	Included	Included	Included	Included
Remote Dial-up	Included	Included	Included	Included	Included
Standard Reports	Included	Included	Included	Included	Included
Database Partitioning	N/A	N/A	Optional	Optional	Optional
Custom Report License (with Crystal Reports)	N/A	N/A	Optional	Optional	Included
Photo ID Badging	N/A	Optional	Optional	Optional	Optional
Pinnacle Data Exchange	N/A	Optional	Optional	Optional	Optional
Pinnacle LDAP Sync Service	N/A	Optional	Optional	Optional	Optional
Visitor Management –EasyLobby SVM™	N/A	Optional	Optional	Optional	Optional
Aegis3 - Graphical Command Control	N/A	N/A	Optional	Optional	Optional
CCTV, DVR, Intercom and Serial Alarm	N/A	N/A	Optional	Optional	Optional
Software Developer Kit (SDK)		N/A	Optional	Optional	Optional
Smart Elevator Interface - Otis / ThyssenKrupp / Schindler	N/A	N/A	Optional	Optional	Optional

**Supported Requirements:
Pinnacle Server and Client Workstations**

Operating System (OS Not Included)	Ultra, Lite, Standard, Plus, Professional 32-bit Windows OS; Server 2008 Standard, Windows 7 Professional, Windows 8.1. 64-bit Windows OS; Windows 7 Professional, Server 2008 R2 Standard, Windows 8.1, Windows 10, Windows Server 2012, 2012 R2, 2016, 2019. <i>(Note: 32-bit Windows is not supported with any version of Pinnacle Web)</i>
Database Engine Guidelines (SQL 2014 Express SP3 Included)	Ultra, Lite, Standard, Plus, Professional Greater than 128 readers OR 10,000 cardholders OR 5,000 events per hour OR 4 client workstations OR database partitioning requires the use of MS SQL Server 2016 Standard or Enterprise editions or newer.

Client		
	Processor	Memory
Ultra	i3 minimum	4GB
Lite	i3 minimum	4GB
Standard	i3 minimum	4GB
Plus	i3 minimum	8GB
Professional	i3 minimum	8GB
Server		
Ultra	i3 minimum	4GB
Lite	i3 minimum	4GB
Standard	i5 minimum	8GB
Plus	i5 minimum	8GB
Professional	i5 minimum	8GB
Ports	4 USB or onboard serial port	

Note: Certain Pinnacle screens, such as the device tree, requires MS Paint to be resident on your computer (included with Windows). Actual requirements may vary; increasing memory and processor speed has been found to improve performance.

When installing Aegis3 and Pinnacle on the same computer 4 GB of RAM is required for Pinnacle Lite and Standard and 8 GB for Pinnacle Plus and Professional.

Specifications and availability are subject to change without notice.



Innovative Security Management Since 1979



Sielox Layered Security Systems provide a smart way to protect people, property and assets with the highest levels of performance, reliability and cost-efficiency. Since 1979, Sielox has built its expertise working with integration partners and end-users in all types of facilities. Our "Made in USA" lockdown solutions include the AnyWare Browser-Based Access Control Solution, CLASS Crisis Lockdown Alert Status System, 1700 Intelligent Controller and Pinnacle Advanced Access Control Software integrated with leading manufacturer wireless locks.

