

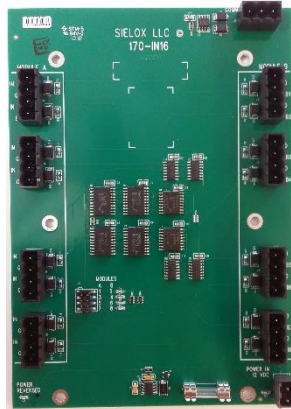
# I/O Expansion Boards

Sielox designs and manufactures innovative solutions that maximize overall performance and efficiency of commercial access control.

Sielox introduces a new line of 170 I/O Expansion boards providing a low-cost solution for all I/O applications, large and small. Typical applications include elevator control, alarm monitoring, alarm annunciation, and building control. Up to two I/O expansion boards can be connected to each 1700/2700 controller in any combination.



*CN-SLX-170-OUT16*  
*Output Expansion Board*  
*with 16 relay outputs*



*CN-SLX-170-IN16*  
*Input Expansion Board*  
*with 16 supervised inputs*



*CN-SLX-170-IO8/8*  
*Combination Board*  
*with 8 supervised inputs*  
*and 8 relay outputs*

**Same mounting as the 2700 controller**

**Backwards compatible with Pinnacle and AnyWare access control software systems**

**Modular: Mix and match expansion board types**

**Expandable: Daisy chain up to two I/O expansion boards with each 1700 controller**

**Expandable: Daisy chain up to four I/O expansion boards with each 2700 controller**

**Socketed relays for all outputs**

**Same relays as those used on the 1700/2700 controller.**

**Same connectors and connector pinout as on the 1700/2700 controller.**

**Low cost: No backplane or power modules required**

**Outputs: 2A, 2 Form C Relays**

**Inputs are supervised with end of line resistors**

**Reverse input power wiring protection**

# I/O Expansion Boards

I/O Board	Description
<p><b>170-OUT16</b> <b>Output Expansion Board with 16 relay outputs</b></p>	<p><b>Provides 16 relay outputs</b></p> <p>Each relay is 2A, 2 Form C. All relays are field-replaceable. Outputs are configured and managed in the Pinnacle and AnyWare systems. The Access Level Output Control (ALOC) feature is used for elevator interfacing. I/O Linking and Event Generated Outputs (EGO) provide powerful and flexible configuration for output applications.</p>
<p><b>170-IN16</b> <b>Input Expansion Board with supervised inputs</b></p>	<p><b>Provides 16 supervised inputs</b></p> <p>Inputs are supervised with 5.1K Ohm end of line resistors and are configured and managed in the Pinnacle and AnyWare systems. Access Level Input Control (ALIC) and I/O linking facilitate alarm monitoring and a wide variety of input applications.</p>
<p><b>170-IO8/8</b> <b>Combination Board with 8 supervised inputs and 8 relay outputs</b></p>	<p><b>Provides 8 relay outputs and 8 supervised inputs</b></p> <p>Provides flexibility where a small number of expansion inputs and outputs are required. Inputs and outputs are configured and managed in the Pinnacle and AnyWare systems with ALIC, ALOC, EGO and I/O Linking. All relays are field replaceable.</p>

**Voltage:** 12 VDC (11 VDC to 18 VDC)

**Output cable:** application dependent.

**Current Dissipation:**

- 170-OUT16: 400 mA max at 12VDC
- 170-IN16: 100 mA max at 12VDC
- 170-IO8/8: 250 mA max at 12VDC

**Communication cable to 1700/2700 controller:**

22 AWG, 3 conductors, shielded, 15' max.

**Relay Contact Rating:** 2.0A max at 24 VDC or 24 VAC

**Printed Circuit Board:**

5.0" wide x 7.0" tall

**Input cable:** 22 AWG, 2 conductors per input, shielded, 500' maximum

## About Sielox

Sielox Lockdown Security Layers are the smart way to protect your facility assets. Since 1979, Sielox has designed and engineered innovative "Made in USA" security management systems, marketing through a select network of integrators to a variety of end-users. Our cost-effective Pinnacle Advanced Access Control, 2700 Intelligent Controller, AnyWare browser-based access control, CLASS Crisis Lockdown Alert Status System, first-to-market OEM wireless locks, readers, credentials, cameras and power supplies exceed today's demanding lockdown security environments.

